

# CIF-SS BULLETIN



**Southern Section**  
Academics / Integrity / Athletics



VOL. 77, NO. 2

WINTER 2014-2015



For Full CIF-SS Fall Playoff Results

See pages 8-12

Serving High School Athletics  
Since 1913

## CIF-SS COUNCIL MEETING MINUTES

### October 23, 2014

#### 1. OPENING BUSINESS\

A. Call to order by Reggie Thompkins, President of the Council

The meeting was called to order at 9:04am

B. Pledge of Allegiance

C. Roll Call

D. Introduction of Guests:

Roger Blake from the CIF State

Office

Introduction of the Executive Committee

Jeremy Balan from OC Register

Eric Sondheimer from LA Times

1. Gatorade Presentation - Melanie Shell - Gatorade representatives offered the opportunity for schools to speak with their marketing team about all that Gatorade has to offer their schools in terms of products and incentivized programs. The Gatorade representatives also discussed their premier high school event; G-Week, where Gatorade provides product for the student-athletes at the participating schools who comply with the parameters of the program.

2. Special Olympics Southern California Presentation - Bill Shumard - Mr. Bill Shumard thanked all of the administrators in the room who work on behalf of the student-athletes in our Section. He also shared that the Special Olympics is the world's largest sports organization serving over 16000 athletes from San Louis Obispo to San Diego. The organization reached out to Roger Blake and Rob Wigod to initiate a conversation about high school administrators providing opportunities for unified sports for students with handicaps. In 6 different states, a high school student-athlete can letter in JV, Varsity, and Unified sports. Special Olympics also hosts the World Games which is the largest sporting event in the world and biggest event since the 1984 Olympic Games. The World Games sponsors 25 sports in several different venues and provides 30,000 volunteers to support and promote unified sports. There are 75 cities in the footprint that will serve as hosts to all of the different countries that will participate in the Special Olympics Games. For those interested in getting involved, this is a great team building opportunity for student-athletes, coaches and staff of CIF-SS member schools. ESPN is a presenting sponsor worldwide for unified sports. Lastly, Mr. Shumard left the group with the reminder that people get involved with the organization to help the athletes, but in the end it is the athletes who have a greater impact within the communities serving to support and assist with the events. Mr. Reggie Thompkins mentioned that the City of Corona will serve as a host city for the upcoming event and the community is really looking forward to being involved and support the Special Olympics organization.

E. Adopt Agenda - A motion and a second were made to adopt the agenda; the motion was approved and the agenda was adopted without revision. The motion carried unanimously.

F. Approval of Minutes

1. Minutes of the April 30, 2014 Council Meeting - A motion and a second were made to adopt the minutes; the motion was approved and the minutes were adopted without revision. The motion carried

unanimously.

#### 2. PUBLIC HEARING SESSION

A. Recognition of anyone wishing to address the Council. Speakers must limit their remarks to three minutes. Mike Wilks and Meagan Nelson from MaxPreps introduced themselves and provided a brief historical perspective of MaxPreps and the products offered to Southern Section member schools. All scores entered into MaxPreps flow to the CIF-Southern Section public website. When coaches submit postgame results on MaxPreps, they also have the opportunity to send that information to selected media outlets. MaxPreps has projected to collect over 2 million scores on their site. A new app, MPCoach has launched to allow coaches to enter complete scores and schedules directly from their smart devices. The app is already available for iOS systems and an Android app will be available soon.

Brett Proctor from Alta Loma addressed the Council to solicit any reconsideration of the Association Rule. Mr. Proctor cited student-athlete and Coach burn-out, straining the multi-sport athlete as reasons to consider revisiting the Association Rule. The goal would be to provide a solution that would give our coaches and athletes an opportunity to have a break from their sport in order to provide a greater balance for student-athletes and coaches. Any council members interested in continuing the conversation should contact Mr. Proctor via email or phone to discuss further.

#### 3. ACTION ITEMS

A. STATE FEDERATED COUNCIL ACTION ITEMS

There are no State Federated Council action items at this time.

B. SOUTHERN SECTION ACTION ITEMS

There are no Southern Section action items at this time.

#### 4. NON-ACTION ITEMS

A. STATE FEDERATED COUNCIL NON-ACTION ITEMS

1. Proposed Bylaw 503 H. Concussion Protocol Revision - Carter Paysinger reviewed the proposal for 503 H. Concussion Protocol Revision.

2. Proposed Bylaw 1901 A & B Additions - Carter Paysinger reviewed the proposal for Bylaw 1901 A & B.

3. Proposed Bylaw 1502 (baseball) and 2502 (softball) Additions - Carter Paysinger reviewed the proposal for Bylaw 1502 and 2502. There was discussion addressing the following: effective date (will be voted on in January for immediate implementation for the Baseball/Softball season), can the proposal be separated by sport and not voted on as a package, baseball and softball are two different sports and should be categorized as such.

4. Proposed State Girls Volleyball Tournament Revisions - Carter Paysinger reviewed the proposal for the State Girls Volleyball Tournament Revisions.

5. Proposed State Football Bowl Championships Revisions - Carter Paysinger reviewed the State Football Championships (See **COUNCIL MINUTES** on next page)

### California Interscholastic Federation Southern Section

10932 Pine Street

Los Alamitos, CA 90720

(562) 493-9500 \* FAX (562) 493-6266

#### OFFICERS

Reggie Thompkins, Admin. Dir. Student Services  
Corona-Norco USD, President

Carter Paysinger, Consultant  
Las Virgenes USD, President-Elect

Jim Monico  
Paramount USD, Past-President

Jeff Jordan, Principal  
Walnut High School, Treasurer/Mt. SAC Area Rep.

Rob Wigod, Commissioner of Athletics

#### BULLETIN EDITOR

Thom Simmons, Director of Communications

#### EDITORIAL ASSISTANT

Anita Fopma, CIF-SS Administrative Assistant

Photos provided by Heston Quan

**Bulletin published three times yearly by CIF Southern Section**

## COUNCIL MINUTES

(Continued from previous page)

Revisions.

6. Proposed Revision of Bylaw 22.B.(9) Coaches Education and - Training and Bylaw 503 J. Sudden Cardiac Arrest Protocol Carter Paysinger reviewed the proposal for the revision of Bylaw 22.B.(9) regarding Coaches Education and Training and Bylaw 503 J. addressing Sudden Cardiac Arrest Protocol.

### B. SOUTHERN SECTION NON-ACTION ITEMS

1. Proposal Recommendation for Second Level of Appeal for Area Placement Decisions - Reggie Thompkins reviewed SS508 and explained that the proposed recommendation is designed to mirror the relegating process and add an additional level of appeal for Area Placement Decisions.

### 5. NEW BUSINESS

A. Public/Private Committee Report - Rainer Wulf - Rainer Wulf provided historical background of the Public/Private Committee for the Council in addition to an update of the last Committee meeting. Alan Clinton from Servite High School and Jim Perry from Huntington Beach Unified presented to the Council on behalf of the committee. They shared that while this isn't a new issue to the Section, the committee is tasked with discussing solutions to provide equity and parity for all schools in our Section with regards to competitive equity. As the Committee continues to brainstorm possible solutions with regard to competitive equity between public and private schools, consideration will be made for the following: strength of schedule, playoff history, and strength of program.

### 6. REPORT SESSION

A. President's Report - Reggie Thompkins - Reggie Thompkins provided an update from the 2014 NFHS Summer Conference where the hot topic concussion protocol and the national concerns regarding the health and safety of the student-athletes. There were also national discussions surrounding amateur status issues with some states sharing the extreme solutions used to combat the issue. Mr. Thompkins also provided a Section 7/8 meeting summary and CIF remains ahead of the majority of states in our region. It is nice to know that CIF-SS continues to be ahead of the curve with what we are doing in the Section and the State. With California hosting the meeting next year, it will be nice to showcase what we do as an organization. Lastly, at Santiago HS, there was an opportunity for a young man with special needs on the football team who was able to score a touchdown for his freshmen football team. What a great show of sportsmanship by our student-athletes and coaches.

B. Treasurer's Report - Jeff Jordan - Jeff Jordan provided an update from the independent auditor (the Harrington Group) who submitted their final report in August for the 2013-14 fiscal year. At the end of the fiscal year, the CIF-SS revenue was \$4,076,252 with \$3,976,811 in expenses leaving a net profit of \$99,441. For the 2014-15 academic year the current financial position is as follows; revenues are at \$779, 574 with expenses listed at \$1,067,816 resulting in a deficit of \$288,242. There is always a loss in the 1st

quarter since the championship season hasn't started yet. The CIF-SS is currently focusing on the solar panel project which will increase the value of the building and create a long term expense reduction solution to overhead costs. Lastly, out of the 576 total member schools in the Section, 574 have paid their dues. To have almost all schools within a month of the due date (October 1) is unprecedented. This is a testament to the maturation of the CIF-SS Home system and the diligence of our member schools.

C. Commissioner's Report - Rob Wigod - Commissioner Wigod welcomed to the first time members and attendees. As a Section Office, we are focused on moving forward and improving on what we are doing for our member schools. The Commissioner expressed his appreciation for the attendance of the CIF Executive Director, Roger Blake and a special thank you to the staff for all of the work that they do throughout the year. Catherine Gretsund, newest addition to the CIF-SS Office was introduced as well as CIF-SS interns, Chelsea Heyward and Lindsay Warkintin were introduced as well. In an effort to assist member schools in preparation for playoff readiness, all schools received a document from Greta Rens in our office providing all playoff information for all of our Fall Championships. The new 'Message from the Commissioner' introduced the idea of a new playoff/power ranking model we are currently working on with Wes that will be used through CIFSSHOME. We are creating a formula that would take the following into consideration; strength of schedule, playoff performance, and regular season schedule to shift from league based divisions to a more competitive equity based model. We are also considering the implementation of a new AD Symposium that would be offered to our member schools. Rainer Wulf sent out a survey to seek input from our membership to gauge interest in attending a one day AD Symposium. To date, we have received 250 responses from the survey with 94% of the responses in favor of the symposium. The survey included a list of topics that would be covered to assist in the professional development of our athletic administrators and provided an option to give additional feedback. The target date for the event would be sometime next fall should we choose to move forward with that program. We appreciate all of your involvement on behalf of the schools and leagues, as always our administrative staff is happy to attend your league meetings to answer any questions you may have. In closing, our thoughts and prayers go out to the Perry family in the passing of Dr. Richard Perry, an influential man in our Section and in our community, he will truly be missed.

### 6. ADVANCE PLANNING

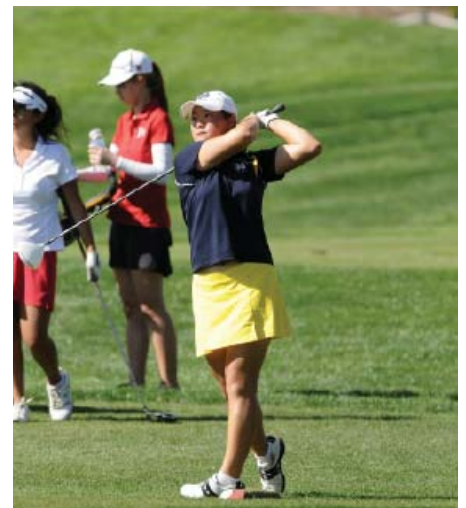
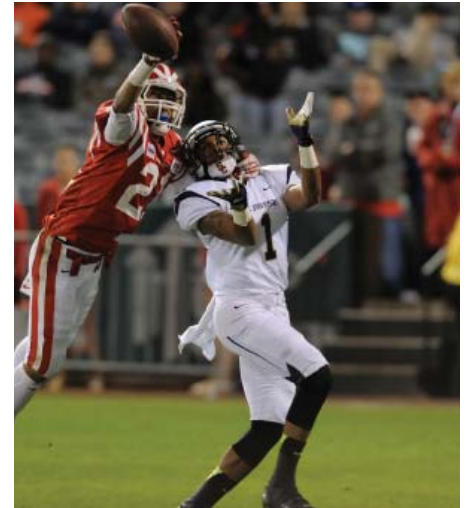
#### A. DATES

1. January 17, 2015 – Executive Committee Meeting, Cliffs Resort, Pismo Beach, California

2. January 28, 2015 – CIF Southern Section Council Meeting, The Grand, Long Beach, California

### 7. ADJOURNMENT

A. Time of Adjournment 10:07am





# MINUTES OF THE EXECUTIVE COMMITTEE MEETING

## August 14, 2014

### 1. OPENING BUSINESS

A. Call to order by Reggie Thompkins, President of the Council. The meeting was called to order at 1:02 p.m.

B. Pledge of Allegiance

C. Roll Call - All members of the Executive Committee were present with the exception of: Rita Dever, Paul Kostopoulos, Don Sedgwick, and Val Wyatt.

D. Introduction of Guests - Mackenzie Hammond was introduced as a new intern for CIF Southern Section.

E. Adopt Agenda Adopted A motion and second were made to adopt the agenda; the motion was approved and the agenda was adopted without revision.

F. Approval of Minutes Approved There was a motion and a second to approve the minutes of the May 14, 2014 Executive Committee meeting, the motion carried.

### 2. PUBLIC HEARING SESSION

A. There was no one present to address the Executive Committee.

### 3. ACTION ITEMS

#### A. STATE FEDERATED COUNCIL ACTION ITEMS

There are no State Federated Council action items at this time.

#### B. SOUTHERN SECTION ACTION ITEMS

There are no Southern Section action items at this time.

### 4. NON-ACTION ITEMS

#### A. STATE FEDERATED COUNCIL NON-ACTION ITEMS

There are no State Federated Council non-action items at this time.

#### B. SOUTHERN SECTION NON-ACTION ITEMS

There are no Southern Section non-action items at this time.

### 5. NEW BUSINESS

A. NFHS Summer Meeting Report - Reggie Thompkins reported on his attendance at the Amateurism Meeting. He stated there was useful discussion at the meeting and most attendees feel there is too much involvement in amateurism issues. There were no resolutions reached at this time as to how to move forward on this topic.

Jim Monico attended the Legal Issues Workshop and a luncheon in which Marie Ishida was honored. He was able to take part in a Football Discussion Forum about rule changes and reported on a new program involving parents in a football workouts to increase awareness of concussion and safety issues. He also announced Susie Powell, from the Northern California area will be inducted in the Hall of Fame. Charlie Ricards expressed his appreciation to attend the NFHS Conference and was impressed about the professionalism of the organization and the involvement of state representation. He attended the Board meeting and reported the largest topic of discussion was transfers and eligibility. He gave examples of other state processes but the commonality across all states is the best interest of the kids.

B. Financial Report - Mitch Carty - A handout was provided to the committee and a review of the financial position of CIF Southern Section was explained. Mitch also reported the hiring of Katherine Gredsund as a new part time employee. She will work with the finance office.

C. Television and Website - Thom Simmons

-

It is anticipated that \$205k in revenue sharing will be distributed to member schools at the end of the 2014-2015 school year. A total of 150 CIF football games, girls' volleyball, track & field, baseball, softball and boys and girls basketball will be live streamed

this upcoming year. Aquatics and wrestling will no longer be covered by Prep Zone. CIF Southern Section website revision will made this upcoming year. Both Emmy and Telly awards have been received for Fox Sports West coverage of high school athletics.

D. Communications Update - Thom Simmons - A Social Media handout was provided to the committee, as Thom Simmons explained the information about all social media outlets and the presence of the CIF Southern Section within them.

E. Misconduct Analysis and Potential Proposal - Kristine Palle - Assistant Commissioner Kristine Palle, explained the current game suspension policy as it relates to misconducts and posed the question if it appropriate for all circumstances. The committee discussed the issues and asked for comparisons with other state and CIF sections prior to a giving support for a proposal being written. Assistant Commissioner Rainer Wulf stated misconducts and consequences cannot be contained into one policy of ejections and suspensions due to difference amongst sports. The Executive Committee asked for the comparative information to be gathered and reported back.

### 6. OLD BUSINESS

A. Proposal Recommendation for Second Level of Appeal for Area Placement-Rob Wigod - Decisions A request was made for support from the Executive Committee for a potential bylaw change to be drafted by the Commissioner as being requested by legal counsel. The proposal will be reviewed and placed on the Council agenda for October 2014. There was no one on the committee who opposed the draft of the proposal.

B. Open Division Basketball - Rainer Wulf - Assistant Commissioner Rainer Wulf provided an overview of the newly established Open Division Basketball in the past season. He reported the competitive level of play increased in the creation of the new division and it created discussion in the basketball community about the watch list and open division committee. The newly formed division caused an increased attendance revenue by 25% in boys' basketball and 55% in girls' basketball and the majority of divisions in both boys and girls had increased attendance numbers. Rainer fielded mainly positive feedback in regards to the atmosphere and format created by the open division.

### 7. CLOSED SESSION

The Committee began closed session at 2:05 p.m. to receive a legal update from Commissioner Rob Wigod and the committee reviewed and accepted the Commissioner's 2014/2015 goals that were presented.

### 8. REPORT SESSION

#### A. President's Report

- Reggie Thompkins - The president reported on the gender equity issue being on the forefront in many schools at this current time. He stated the focus should remain on leading kids with action.

B. Treasurer's Report - Jeff Jordan - Jeff Jordan reported the annual internal audit will begin in August 2014 and will be conducted by The Harrington Group. The Executive Committee will receive a report after an Audit Committee review is completed in October. The treasurer reported \$4m in revenue for CIF Southern Section, with a net profit \$101k for the 2013/2014 year. A membership dues update was given as to date and with 576 member schools, 39% have paid their dues at this time.

C. Commissioner's Report - Rob Wigod - The Commissioner reported on eligibility workshops that are currently taking place and upcoming new school staff workshops planned in September. He also reported the appointment of two assistant commissioners, Kristine Palle and Brandi Stuart to NFHS Committees and appreciates the visibility of CIF Southern Section on a national level. Executive

Committee group photo for 2014/2015 will take place at the October 9 meeting, with lunch prior. Members are to wear the new attire that was provided for this year and not navy blue blazers as in the past. He also thanked the leadership team and acknowledged Reggie Thompkins for serving as President of CIF Southern Section Council and President of Federated Council concurrently.

D. Executive Committee Member Reports - Sam Buenostro reported his district was hiring for positions throughout the summer and releguing will begin as the Citrus Belt area participates in a two year releguing cycle.

Terry Orabona announced the upcoming \$20m sports complex that is being built on their campus with a 3500 capacity and currently finding other facilities for teams to practice and compete in.

Brandi Stuart offered appreciation for the Executive Committee guidance throughout the year and asked Committee members for new apparel sizing changes.

Rainer Wulf discussed cross country and girls' tennis division changes for the upcoming year.

Kristine Palle voiced her appreciation for the perspective and wisdom of the Executive Committee.

Mitch Carty thanked the committee for their support in adding a new staff position.

Loren Kleinrock stated he continues with the committee because he supports the mission of high school athletics.

Mark Rose attended the Champions for Character Golf Tournament and shared what a great experience it was. He encouraged the committee to attend the awards dinner on September 29, 2014 to support the program.

Debi Weiss reported on the summer leadership camp and the New Activity Directors Advisors conference being held in Ontario in September 2014.

Dave Reid thanked staff for the support and reported the schedule and committee is in place for the Citrus Belt releguing process.

Todd Arrowsmith reported on his school administration changes.

Jeff Jordan reported the Mt. Sac area will begin their two year releguing process for the first time.

Jim Monico reported participating in the State Appeals Panel training and CIFSSHome training recently.

All other present members reported looking forward to a new school year and expressed appreciation of the staff for their continued work in CIF Southern Section.

### 9. ADVANCE PLANNING

#### A. DATES

1. September 29, 2014 - Champions for Character Award Dinner, Queen Mary Hotel and Conference Center, 6:00 p.m.

2. October 9, 2014 - Executive Committee Meeting, CIF Southern Section Office, Los Alamitos, California, 1:00 p.m.

3. October 23, 2014 - CIF Southern Section Council Meeting, The Grand, Long Beach, California, 9:00 a.m.

4. October 23, 2014 - Distinguished Service/ Hall of Fame Awards Luncheon, The Grand, Long Beach, California, 11:30 a.m.

### 10. ADJOURNMENT

A. The meeting was adjourned at 3:17 p.m.

Respectfully submitted by:  
Heather Smith, Executive Assistant

Approved by:  
Rob Wigod, Commissioner of Athletics

# MINUTES OF THE EXECUTIVE COMMITTEE MEETING

## October 9, 2014

### 1. OPENING BUSINESS

A. Call to order by Jim Monico, Past President of the Council

The meeting was called to order at 1:07 p.m.

B. Pledge of Allegiance

C. Roll Call - All members of the Executive Committee were present with the exception of: Sam Buenrostro and Reggie Thompkins.

D. Introduction of Guests - Catherine Gredsund was introduced as the newly hired part-time Finance Assistant to Mitch Carty.

E. Adopt Agenda - Adopted - A motion and second were made to hear New Business item 5A prior to all other agenda items.

The motion was approved and the agenda was adopted with revision.

F. Approval of Minutes

1. Approval of Minutes - Approved - There was a motion and a second to approve the minutes of the August 14, 2014 Executive Committee meeting, the motion carried.

### 2. PUBLIC HEARING SESSION

A. There was no one present to address the Executive Committee.

### 3. ACTION ITEMS

A. STATE FEDERATED COUNCIL ACTION ITEMS - There are no State Federated Council action items at this time.

B. SOUTHERN SECTION ACTION ITEMS - There are no Southern Section action items at this time.

### 4. NON-ACTION ITEMS

A. STATE FEDERATED COUNCIL NON-ACTION ITEMS

1. Proposed Bylaw 503 H. Concussion Protocol Revision - The item was reviewed by the committee and discussion was held.

2. Proposed Bylaw 1901 A & B Additions - The item was reviewed by the committee and discussion was held.

3. Proposed Bylaw 1502 (baseball) and 2502 (softball) Additions - The item was reviewed by the committee and discussion was held.

4. Proposed State Girls Volleyball Tournament Revisions - The item was reviewed by the committee and discussion was held.

5. Proposed State Football Bowl Championships Revisions - The item was reviewed by the committee and discussion was held.

6. Proposed Revision of Bylaw 22.B.(9) Coaches Education and Training and Bylaw 503 J. Sudden Cardiac Arrest Protocol - The item was reviewed by the committee and discussion was held.

B. SOUTHERN SECTION NON-ACTION ITEMS

1. Proposal Recommendation for Second Level of Appeal for Area Placement Decisions - The item was reviewed by the committee and discussion was held. Budget Upd

### 5. NEW BUSINESS

A. St. Monica Academy Appeal - Girls Volleyball Sanction - Denied - The Southern Section decision to sanction the St. Monica Academy Girls Volleyball program was explained by Rob Wigod, Commissioner. He provided the committee with the history of the incident and how the Southern Section arrived at the sanction decision. St. Monica Academy was represented by Headmaster, Marguerite Grimm and St. Monica

Academy Board Member, Mr. Gulbranson. The school is seeking removal of their probationary status, which prohibits St. Monica Academy from participating in the 2014 Southern Section Girls Volleyball Playoffs. A motion was made and seconded to approve the St. Monica Academy appeal of their probationary status sanction. Discussion held. The motion was defeated by a vote of 0-18-2. Appeal denied.

B. Section 7/8 Report - Reggie Thompkins - Carter Paysinger - Chris Calderwood

C. Audit Report - Mitch Carty - Chief Financial Officer Mitch Carty informed the Executive Committee of the recently completed audit and that the final audit will be finished in November.

D. Marketing Report - John Costello - Marketing Director John Costello reviewed the latest information regarding the number of televised events, as well as Prep Zone events, broadcast by Fox Sports West, along with the latest ratings numbers for viewership of those broadcasts.

E. Athletic Director Symposium - Rob Wigod - Commissioner Wigod informed the Executive Committee of plans to hold a Southern Section Symposium in October 2015. More information regarding that event will be forthcoming.

F. Public/Private Committee Report - Rainer Wulf - Assistant Commissioner Rainer Wulf reported on the meeting recently held by the Public/Private Committee.

### 6. OLD BUSINESS

A. Misconduct Analysis and Potential Proposal - Kristine Palle - This item was tabled until the next Executive Committee meeting on January 17, 2015.

### 7. CLOSED SESSION

The Committee began closed session at 3:42 p.m. to discuss personnel matters with no action taken. The meeting was back in regular session at 4:05 p.m.

### 8. REPORT SESSION

A. President's Report - Jim Monico - Past President Jim Monico expressed regrets on behalf of President Reggie Thompkins for being unable to attend today's meeting due to district obligations.

B. Treasurer's Report - Jeff Jordan - The process of solar panel installation was reviewed with the Committee and overall view of the financial status of CIF Southern Section.

C. Commissioner's Report - Rob Wigod - The Champions for Character program student scholarship amounts have been increased and there continues to be a visible shift in sportsmanship while participating in athletics. The Commissioner also reported the April 2015 Executive Committee meeting will be held either at Dodger Stadium or Angel Stadium, as the planning is still not complete.

D. Executive Committee Member Reports

- Terry Barnum reported Mary Beth Ortiz, Principal at San Mateo will join him as the CAPSO Representative.

Debbie Weiss reported there is an upcoming Area E Conference to discuss sportsmanship.

Don Sedgwick enjoyed the great experience attending the Champions for Character event. He announced he will be leaving the

Executive Committee, but thanked everyone for the experience. He stated being a part of the Committee has been a highlight in his administrative career. He suggested an improved relegating process for more appropriately placed school in competition.

Jim Perry suggested the Orange County area review and possibly adopt a process similar to the Inland Empire leagues. He reported new initiatives are being discussed within the Huntington Beach area in relation to sports medicine.

Sandy Gahring reported CSADA met recently to plan the upcoming conference in Reno, Nevada.

Todd Arrowsmith issued an invitation to the committee to attend area CADA conferences and commended Debbie Weiss for the great job organizing conferences for the students and the administrators. The conference will focus on sportsmanship and school spirit.

Rainer Wulf requested suggestions from the group for CIF Southern Section symposium facilitators.

Glenn: Information on FB playoffs. Will be asking for presenters at the championship games as we get closer to the games

Paul Kostopoulos announced the former baseball coach at Mammoth High School will be honored at a luncheon on October 23, 2014.

Dave Reid reported the CSADA website was redesigned with assistance from Chris Calderwood. He also remarked on the impressive crowd size at the Norco High School football game.

Rita Dever reported CAA has met and begins the year with all new officers

Chris Calderwood thanked the Commissioner for inviting him to the Section 7/8 meeting this year.

Val Wyatt expressed her gratitude for being able to attend the Champions for Character dinner and she was impressed with how well the program ran.

Loren Kleinrock felt the appeal discussion today went well and the issues that were addressed were important.

Jeff Jordan reported having a student athlete honored at the Champions for Character dinner and an article was written about the student in a local newspaper and has been featured in social media.

Rob Wigod thanked Don Sedgwick for his work with the Committee and recognized his input and feedback throughout his time served.

### 9. ADVANCE PLANNING

A. DATES

1. October 23, 2014 - CIF Southern Section Council Meeting, The Grand, Long Beach, California, 9:00 a.m.

2. October 23, 2014 - Distinguished Service/Hall of Fame Awards Luncheon, The Grand, Long Beach, California, 11:30 a.m.

3. January 17 - 19, 2015 - Executive Committee Retreat, Cliffs Resort, Pismo Beach, California

B. SUGGESTED AGENDA ITEMS - There are no suggested agenda items for the next meeting.

### 10. ADJOURNMENT

A. The meeting was adjourned at 4:30 p.m.

Respectfully submitted by:  
Heather Smith, Executive Assistant

Approved by:  
Rob Wigod, Commissioner of Athletics

# CIF SOUTHERN SECTION - FORD 2014 FOOTBALL PLAYOFF RESULTS

<b>CENTRAL FIRST ROUND:</b>	<b>EASTERN FIRST ROUND:</b>	<b>EAST VALLEY FIRST ROUND:</b>	<b>INLAND FIRST ROUND:</b>	<b>MID VALLEY FIRST ROUND:</b>	<b>NORTHERN FIRST ROUND:</b>	<b>NORTHWEST FIRST ROUND:</b>
Colony 48 La Canada 0	La Quinta/LQ 49 Apple Valley 34	St. Margaret's 59 Excelsior Charter 16	Redlands East Vly 61 JW North 17	Paraclete 44 Bassett 0	Lompoc 38 Camarillo 28	Maranatha 47 Mission Prep 21
Glendora 24 Summit 14	Vista Del Lago 45 Patriot 21	St. Genevieve 35 Santa Paula 6	Elsinore 44 Jurupa Hills 3	Azusa 33 El Monte 26	Arroyo Grande 7 Nordhoff 0	Arrowhead Chr 48 Cantwell Scred Hrt 19
Charter Oak 40 Colton 0	Norte Vista 70 Barstow 24	Saddleback Vly Chr 51 Crean Lutheran 19	Rancho Verde 52 Paloma Valley 16	Montebello 24 La Puente 17	Paso Robles 42 Royal 14	Templeton 47 Heritage Christian 27
San Marino 49 Claremont 28	Serrano 56 Palm Desert 16	Silver Valley 52 Rancho Christian 14	Citrus Hill 63 Citrus Valley 14	Northview 49 Brentwood 21	Palmdale 31 Pioneer Valley 7	Big Bear 41 Rio Hondo Prep 0
Bonita 45 Kaiser 14	esperia 48 La Sierra 41	St. Anthony 48 Capistrano Vly Chr 32	Poly/Riverside 42 Tahquitz 17	Pomona 65 Christa McAuliffe 0	Atascadero 48 Thousand Oaks 41	Shadow Hills 49 Notre Dame/R 7
West Covina 18 Chaffey 15	Palm Springs 30 Moreno Valley 22	Vasquez 35 Calvary Murrieta 19	San Geronio 55 Cajon 7	San Dimas 59 Baldwin Park 20	Bishop Diego 21 Antelope Valley 14	Nipomo 58 Bishop Montgomery 7
Los Altos 28 South Hills 10	Silverado 77 Ribidoux 14	Brethren Christian 35 Desert 24	Carter 37 San Jacinto 22	Rosemead 31 Covina 27	St. Joseph/SM 24 Eastside 9	Linfield Christian 28 Valley Christian/C 27
Monrovia 26 Don Lugo 20 (OT)	Oak Hills 66 Cathedral City 20	Grace Brethren 62 Webb 29	Heritage 54 Rim of the World 7	Sierra Canyon 43 Bell Gardens 14	Newbury Park 56 Righetti 28	Poly/Pasadena 7 Morro Bay 0
<b>QUARTERFINALS:</b>	<b>QUARTERFINALS:</b>	<b>QUARTERFINALS:</b>	<b>QUARTERFINALS:</b>	<b>QUARTERFINALS:</b>	<b>QUARTERFINALS:</b>	<b>QUARTERFINALS:</b>
Colony 41 Glendora 27	La Quinta/LQ 49 ista Del Lago 13	St. Margaret's 36 St. Genevieve 34	Redlands East Vly 42 Elsinore 36	Paraclete 63 Azusa 0	Arroyo Grande 28 Lompoc 3	Arrowhead Chr 42 Maranatha 28
Charter Oak 49 San Marino 31	Serrano 24 Norte Vista 0	Saddleback Vly Chr 38 Silver Valley 35	Citrus Hill 35 Rancho Verde 33	Northview 42 Montebello 24	Paso Robles 49 Palmdale 16	Templeton 34 Big Bear 28
Bonita 24 West Covina 13	Palm Springs 37 Hesperia 20	St. Anthony 42 Vasquez 12	Poly/R 38 San Geronio 33	Pomona 41 San Dimas 14	Atascadero 33 Bishop Diego 7	Nipomo 56 Shadow Hills 20
Los Altos 45 Monrovia 35	Oak Hills 47 Silverado 24	Grace Brethren 49 Brethren Christian 28	Heritage 28 Carter 19	Sierra Canyon 33 Rosemead 12	Newbury Park 42 St. Joseph/SM 26	Poly/Pasadena 20 Nipomo 11
<b>SEMIFINALS:</b>	<b>SEMIFINALS:</b>	<b>SEMIFINALS:</b>	<b>SEMIFINALS:</b>	<b>SEMIFINALS:</b>	<b>SEMIFINALS:</b>	<b>SEMIFINALS:</b>
Colony 35 Charter Oak 26	Serrano 52 La Quinta/LQ 24	St. Margaret's 28 Saddleback Vly Chr 7	Redlands East Vly 34 Citrus Hill 31	Paraclete 15 Nortview 12	Paso Robles 28 Arroyo Grande 21	Arrowhead Chr 40 Templeton 30
Los Altos 27 Bonita 13	Palm Springs 47 Oak Hills 24	Grace Brethren 41 St. Anthony 38	Poly/R 28 Heritage 20	Pomona 33 Sierra Canyon 20	Newbury Park 49 Atascadero 48	Nipomo 48 Poly/Pasadena 14
<b>FINAL:</b> Colony 35 Los Altos 13	<b>FINAL:</b> Palm Springs 24 Serrano 21	<b>FINAL:</b> St. Margaret's 34 Grace Brethren 21	<b>FINAL:</b> Redlands East Vly 36 Poly/R 33	<b>FINAL:</b> Pomona 37 Paraclete 29	<b>FINAL:</b> Paso Robles 13 Newbury Park 10	<b>FINAL:</b> Nipomo 22 Arrowhad Chr 19
<b>PAC 5 FIRST ROUND:</b>	<b>SOUTHEAST FIRST ROUND:</b>	<b>SOUTHERN FIRST ROUND:</b>	<b>SOUTHWEST FIRST ROUND:</b>	<b>WESTERN FIRST ROUND:</b>	<b>WEST VALLEY FIRST ROUND:</b>	<b>EIGHT-MAN DIV. 1 FIRST ROUND:</b>
St. John Bosco 50 Cabrillo/LB 0	St. Francis 49 Mayfair 14	Garden Grove 49 Calvary Chapel/ SA 0	Corona del Mar 17 Tustin 7	West Torrance 34 Santa Monica 18	Upland 42 San Juan Hills 7	Thacher 62 Animo Leadership 18
Norco 71 St. Bonaventure 70 (OT)	La Serna 24 Dominguez 21	Brea Olinda 34 Ocean View 0	Trabuco Hills 52 Troy 28	Calabasas 47 Buena 41 (OT)	Hart 30 Edison 22	Laguna Blanca 66 San Jacinto Vly Acad 44
Crespi 45 Santa Margarita 13	Paramount 18 Norwalk 14	Santiago/GG 13 Estancia 9	Buena Park 43 Cypress 34	Palos verdes 35 Lawndale 28	Vista Murrieta 56 Canyon/CC 28	St. Michaels Prep 36 Upland Christian 32
Poly/LB 34 Servite 33	Crescenta Valley 42 Harvard Westlake 14	El Modena 19 Katella 12	Villa Park 42 Irvine 17	Oxnard 28 Torrance 23	Tesoro 52 Newport Harbor 14	Chadwick 46 Villanova Prep 16
Centennial/Cor 68 Serra 64	Cathedral 36 Muir 22	Canyon/Anaheim 55 Santa Ana 0	Capistrano Valley 44 La Habra 42	Ventura 49 South Torrance 7	Great Oak 55 Chino Hills 37	Mojave 70 Milken Community 26
Mater Dei 28 Westlake 7	Downey 51 California 20	Los Amigos 48 Magnolia 13	Valencia/Placentia 45 Northwood 14	REdondo Union 14 Pacifica/Oxnard 13	El Toro 59 Los Alamitos 21	Cate 49 Public Safety Acad 22
Bishop Amat 47 Lakewood 18	Burbank 38 El Rancho 34	Rancho Alamitos 50 Saddleback 34	Foothill 22 Woodbridge 3	Simi Valley 45 North Torrance 19	Ran. Cucamonga 52 Valencia/ 20	Orcutt Academy 31 Faith Baptist 26
JSerra 55 Santiago/Cor 16	Salesian 24 La Mirada 18	Westminster 35 Anaheim 9	San Clemente 43 Fullerton 14	El Segundo 52 Rio Mesa 20	Mission Viejo 42 Temecula Valley 6	Avalon 47 Bloomington Chr 3
<b>QUARTERFINALS:</b>	<b>QUARTERFINALS:</b>	<b>QUARTERFINALS:</b>	<b>QUARTERFINALS:</b>	<b>QUARTERFINALS:</b>	<b>QUARTERFINALS:</b>	<b>QUARTERFINALS:</b>
St. IJohn Bosc 48 Norco 7	La Serna 38 St. Francis 35	Garden Grove 21 Brea Olinda 18	Trabuco Hills 28 Corona del Mar 10	West Torrance 52 Calabasas 41	Upland 52 Hart 21	Thacher 60 Laguna Blanca 20
POly/Long Beach 44 Crespi 27	Crescenta Valley 35 Paramount 14	El Modena 41 Santaiago/GG 20	Buena Park 14 Villa Park 0	Palos Verdes 28 Oxnard 7	Vista Murrieta 28 Tesoro 27	Chadwick 58 St. Michaels Prep 20
Centannial/Cor 27 Mater Dei 24	Downey 21 Cathedral 18	Canyon/A 27 Los Amigos 3	Capistrano Valley 36 Valencia/P 7	Ventura 49 Redondo Union 8	Great Oak 27 El Toro 24	Mojave 63 Cate 20
Bishop Amat 24 JSerra 17	Salesian 48 Burbank 27	Rancho Alamitos 34 Westminster 29	San Clemente 56 Foothill 6	Simi Valley 29 El Segundo 21	Mission Viejo 38 Ran. Cucamonga 35	Avalon 56 Orcutt Academy 20
<b>SEMIFINALS:</b>	<b>SEMIFINALS:</b>	<b>SEMIFINALS:</b>	<b>SEMIFINALS:</b>	<b>SEMIFINALS:</b>	<b>SEMIFINALS:</b>	<b>SEMIFINALS:</b>
St. John Bosco 33 Poly/LB 21	Crescenta Valley 41 La Serna 14	Garden Grove 30 El Modena 0	Trabuco Hills 38 Buena Park 7	Palos Verdes 28 West Torrance 16	Vista Murrieta 24 Upland 14	Thacher 48 Chadwick 26
Centennial/Cor 38 Bishop Amat 37	Downey 35 Salesian 14	Rancho Alamitos 34 Canyon/A 28 (OT)	San Clemente 28 Capistrano Vly 27 (OT)	Ventura 30 Simi Valley 27	Mission Viejo 41 Great Oak 36	Mojave 42 Avalon 30
<b>FINAL:</b> Centennial/Corona 48 St. John Bosco 41	<b>FINAL:</b> Crescenta Valley 21 Downey 14	<b>FINAL:</b> Garden Grove 35 Rancho Alamitos 0	<b>FINAL:</b> Trabuco Hills 44 San Clemente 37	<b>FINAL:</b> Palos Verdes 32 Ventura 24	<b>FINAL:</b> Mission Viejo 21 Vista Murrieta 10	<b>FINAL:</b> Mojave 21 Thacher 20

**8-MAN DIVISION 2  
FIRST ROUND:**

Trinity Classical  
Bye  
Noli Indian 49  
Hesperia Christian 21  
Trona 68  
RWestmark 28  
Joshua Springs 82  
Cornerstone Chr/W 8  
Desert Christian Bye  
Lancaster Baptist 65  
Hillcrest Chr/TO 14  
Desert Chapel 72  
California Lutheran 8  
Cuyama Valley  
BYE

**QUARTERFINALS:**

Trinity Classical 58  
Noli Indian 0  
Joshua Springs 62  
Trona 12  
Lancaster Baptist 94  
Desert Christian Acad 44  
Cuyama Valley 38  
Desert Chapel 8

**SEMIFINALS:**

Joshua Springs 42  
Trinity Classical 6  
Lancaster Baptist 74  
Cuyama Valley 48

**FINAL:**

Joshua Springs 42  
Lancaster Baptist 6



**CIF SOUTHERN SECTION - FORD  
2014 FOOTBALL CHAMPIONS**

**CENTRAL**

Colony

**NORTHERN**

Paso Robles

**SOUTHWEST**

Trabuco Hills

**EASTERN**

Palm Springs

**NORTHWEST**

Nipomo

**WESTERN**

Palos Verdes

**EAST VALLEY**

St. Margaret's

**PAC 5**

Centennial/Corona

**WEST VALLEY**

Mission Viejo

**INLAND**

Redlands East Valley

**SOUTHEAST**

Crescenta Valley

**8-MAN DIVISION 1**

Mojave

**MID VALLEY**

Pomona

**SOUTHERN**

Garden Grove

**8-MAN DIVISION 2**

Joshua Springs

**2014 CIF SOUTHERN SECTION FORD GIRLS  
GOLF CHAMPIONSHIPS**

**GIRLS TEAM FINALS**

DIV.	SCHOOL	SCORE
CENTRAL	Diamond Bar	358
EASTERN	Walnut	356
NORTHERN	Notre Dame/Sherman Oaks	390
SOUTHERN	Beckman	374

**INDIVIDUAL FINALS**

PL.	PLAYER/SCHOOL	SCORE
1.	Crystal Wang, Diamond Bar	70
2.	Patricia Wong, Walnut	71
3T.	Madie Chou, Foothill	72
3T.	Nina Novilla, Torrance	72
5.	Marni Murez, Mira Costa	73
6.	Alison Chang, Walnut	74
7T.	Joan Park, Diamond Bar	75
7T.	Ysabel Tran, Troy	75
8T.	Bethany Wu, Diamond Bar	76
8T.	Brigitte Dunne, Oaks Christian	76
8T.	Anabelle Change, Walnut	76

**CIF SOUTHERN SECTION- FORD  
2014 GIRLS TENNIS CHAMPIONS**

**DIVISION 1**

Peninsula

**DIVISION 2**

Valencia/Valencia

**DIVISION 3**

Poly/Pasadena

**DIVISION 4**

South Torrance

**DIVISION 5**

Maranatha



# CIF SOUTHERN SECTION FORD

## 2014 GIRLS VOLLEYBALL PLAYOFF RESULTS

### DIVISION 1AA

**First Round:** Redondo Union def. St. Joseph/Lakewood 25-11, 25-17, 25-14; Tesoro def. Beckman 25-21, 20-25, 25-19, 25-23; Wilson/Long Beach def. Huntington Beach 25-22, 25-20, 27-29, 27-25; Santa Margarita def. Vista Murrieta 25-18, 27-25, 25-14; Great Oak def. Dana Hills 25-19, 25-20, 25-20; JSerra def. Poly/Long Beach 27-25, 25-27, 19-25, 25-17, 15-8; Bishop Montgomery def. Peninsula 31-29, 25-21, 25-21; Marymount def. Newport Harbor 25-13, 25-18, 25-20; Mater Dei def. Millikan 25-18, 25-7, 25-16; Los Alamitos def. La Salle 25-16, 25-16, 25-17; Chaparral 19-25, 25-17, 25-21, 25-19; Mira Costa 25-11, 22-25, 25-23, 16-25, 15-12; Corona del Mar def. Serra 25-9, 25-18, 25-11; Flintridge Sacred Heart 25-9, 25-14, 25-14; San Clemente def. Edison 25-14, 25-23, 25-16; Lakewood def. Murrieta Valley 25-14, 25-21, 21-25, 25-14.

**Second Round:** Redondo Union def. Tesoro 22-25, 25-12, 25-18, 25-18; Wilson/LB def. Santa Margarita 25-22, 25-14, 16-25, 25-23; Great Oak def. JSerra 25-22, 25-21, 23-25, 25-21; Marymount def. Bishop Montgomery 25-16, 25-15, 25-12; Mater Dei def. Los Alamitos 25-17, 25-19, 22-25, 23-25, 15-13; Mira Costa def. Chaparral 18-25, 26-24, 25-21, 25-19; Corona del Mar 25-21, 25-23, 23-25, 19-25, 15-8; Lakewood def. San Clemente 26-28, 28-26, 25-23, 25-19.

**Quarterfinals:** Redondo Union def. Wilson/LB 22-25, 25-23, 25-10, 25-23; Great Oak def. Marymount 20-25, 25-21, 25-25, 21-25, 16-14; Mater Dei def. Mira Costa 25-13, 18-25, 25-23, 23-25, 15-13; Corona del Mar def. Lakewood 20-20, 20-25, 25-20, 26-26, 15-11.

**Semifinals:** Redondo Union def. Great Oak 25-19, 22-25, 25-23, 27-25; Mater Dei def. Corona del Mar 25-20, 13-25, 25-15, 26-24.

**Final:** MRedondo Union def. Mater Dei 25-23, 23-25, 25-20, 25-20.

### DIVISION 1A

**First Round:** Aliso Niguel Bye; Santa Barbara def. Canyon/Anaheim 25-22, 25-18, 25-19; Hart def. Thousand Oaks 25-19, 25-16, 25-11; Rancho Cucamonga def. Yucaipa 25-16, 27-25, 26-24; Redlands East Valley def. Etiwanda 25-17, 25-15, 25-17; Ventura def. Saugus 17-25, 25-21, 25-21, 25-15; Westlake def. Redlands 25-12, 25-27, 25-23, 25-22; ML King def. Foothill 25-23, 25-21, 25-23; Chino Hills Bye; Norco def. Oaks Christian 23-25, 25-22, 25-15, 25-17; Trabuco Hills def. Citrus Valley 25-20, 25-17, 23-25, 25-21; Villa Park def. Buena 25-21, 25-23, 25-20; Valencia/Valencia def. Agoura 25-15, 25-19, 25-21; San Marcos 25-6, 25-16, 25-10; El Toro def. St. Lucy's 25-17, 20-25, 25-22, 25-22; Santiago/Corona Bye.

**Second Round:** Aliso Niguel def. Santa Barbara 19-25, 25-23, 25-17, 25-18; Hart def. Rancho Cucamonga 25-23, 18-25, 25-23, 25-23; Ventura def. Redlands East Valley 25-22, 25-15, 25-23; ML King def. Westlake 21-25, 25-19, 20-25, 25-19, 15-13; CHino Hills def. Norco 24-26, 25-16, 25-13, 17-25, 25-13; Villa Park def. Trabuco Hills 25-17, 25-22, 25-11; San Marcos def. Valencia/V 25-20, 25-13, 25-18; Santiago/C def. El Toro 25-14, 25-12, 25-17.

**Quarterfinals:** Aliso Niguel def. Hart 25-8, 25-15, 25-18; ML King def. Ventura 23-25, 25-18, 16-14; Villa Park def. Chino Hills 19-25, 25-18, 25-23, 25-23; Santiago/C def. San Marco 25-16,

25-27, 25-15, 25-15.

**Semifinals:** Aliso Niguel def. ML King 25-15, 25-14, 25-18; Santiago/C def. Villa Park 25-15, 25-19, 25-21.

**Final:** Aliso Niguel def. Santiago/C 22-25, 25-16, 16-25, 25-17, 15-10.

### DIVISION 2AA

**First Round:** Village Christian def. Godinez 25-13, 25-12, 25-10; Simi Valley def. Atascadero 25-19, 19-25, 25-22, 25-11; South Pasadena def. West Torrance 25-16, 25-21, 25-17; Poly/Pasadena def. Paramount 25-16, 25-19, 25-18; North Torrance def. Royal 25-10, 25-11, 25-19; Downey def. San Luis Obispo 25-20, 25-22, 22-25, 25-21; Whittier Christian def. Calvary Chapel/Santa Ana 25-19, 25-15, 25-21; Brea Londa def. Westridge 25-9, 21-25, 25-12, 25-22; Laguna Beach def. Maranatha 25-18, 25-13, 25-9; Esperanza def. Monrovia 25-19, 25-19, 25-20; Valley Christian/Cerritos def. Gahr 25-11, 25-20, 19-25, 25-18; Mayfield def. Mission College Prep 25-13, 25-13, 25-17; Arroyo Grande 25-8, 25-13, 25-15; La Canad def. Costa Mesa 25-0, 25-9, 25-11; Chadwick 25-22, 25-14, 25-18; South Torrance def. Lynwood 25-19, 25-16, 25-4.

**Second Round:** Village Christian def. Dimi Valley 17-25, 25-14, 25-22, 25-14; Poly/P def. South Pasadena 14-25, 25-17, 25-23, 26-24; North Torrance def. Downey 25-12, 25-16, 25-11; Brea Olinda def. Whittier Christian 25-15, 25-21, 26-24; Esperanza def. Laguna Beach 28-26, 26-24, 12-25, 16-25, 15-13; Mayfield def. Valley Christian/C 25-10, 25-13, 25-7; Arroyo Grande def. La Canada 25-15, 18-25, 23-25, 25-8, 15-5; South Torrance def. Chadwick 23-25, 25-23, 25-16, 22-25, 16-14.

**Quarterfinals:** Vuillage Christian def. Poly/P 20-25, 26-24, 25-26, 25-12; Brea Olinda def. North Torrance 21-25, 23-25, 25-29, 25-14, 15-11; Esperanza def. Mayfield 25-23, 25-16, 25-22; South Torrance def. Arroyo Grande 19-25, 25-21, 19-25, 25-12, 15-10.

**Semifinals:** Village Christian def. Brea Olinda 25-20, 18-25, 25-11, 25-18; South Torrance def. Esperanza 23-25, 25-18, 24-26, 25-14, 15-6.

**Final:** South Torrance def. Village Christian 25-23, 25-20, 26-24.

### DIVISION 2A

**Wild Card Round:** Glendale 25-23, 25-23, 20-25, 21-25, 15-9.

**First Round:** Louisville def. Glendale 25-11, 25-13, 25-11; Cypress def. Pacifica/Oxnard 25-12, 25-18, 25-12; La Habra def. Oak Hills 25-19, 25-19, 25-22; Palm Springs def. Walnut 25-12, 25-12, 25-10; Arcadia def. Apple Valley 25-14, 25-13, 24-26, 25-14; Claremont def. Palm Desert 25-16, 25-23, 25-18; Chaminade def. Oxnard 19-25, 25-22, 25-19, 25-18; Viewpoint def. Diamond Ranch 25-13, 22-25, 25-13, 25-15; Troy def. La Quinta/La Quinta 25-18, 25-16, 25-14; Alemany def. Pacifica/Garden Grove 25-9, 25-12, 25-20; Sierra Canyon def. io Mesa 25-12, 25-13, 25-17; Glendora def. Burroughs/Burbank 25-23, 25-17, 25-18; Serrano def. Sonora 25-22, 25-14, 25-17; Burbank def. Xavier Prep 25-19, 25-21, 20-25, 25-11; Bonita def. Los Altos 19-25, 24-26, 25-11, 25-18, 15-6; Windward def. Western 25-13, 25-23, 25-7.

**Second Round:** Louisville def. Cypress 25-13, 25-12, 25-20; Palm Springs def. La Habra 26-

24, 25-10, 25-14; Arcadia def. Claremont 25-10, 25-20, 22-25, 25-17; Viewpoint def. Chaminade 25-13, 25-11, 25-18; Troy def. Alemany 16-25, 23-25, 25-18, 25-23; Glendora def. Sierra Canyon 25-12, 23-25, 25-21, 25-21; Burbank def. Serrano 25-13, 25-21, 29-27; Windward def. Bonita 19-25, 25-9, 26-16, 25-21.

**Quarterfinals:** Palm Springs def. Louisville 25-21, 25-18, 25-22; Arcadia def. Viewpoint 21-25, 25-23, 25-21, 25-30; Troy def. Glendora 21-25, 25-16, 25-21, 25-21; Windward def. Burbank 25-15, 25-16, 25-14.

**Semifinals:** Palm Springs def. Arcadia 16-25, 25-22, 25-21, 24-26, 20-18; Windward def. Troy 25-21, 25-16, 25-21.

**Final:** Palm Springs def. Windward 25-21, 25-16, 25-21.

### DIVISION 3AA

**First Round:** Sage Hill def. El Rancho 25-10, 25-14, 25-17; Valley View def. Highland 25-18, 26-24, 21-25, 15-25, 15-20; La Serna def. Norwalk 25-19, 25-12, 14-25, 23-25, 15-13; Rim of the World def. Silverado 25-15, 25-10, 25-17; Culver City def. Brethren Christian 25-18, 25-7, 25-7; Poly/Riverside def. Granite Hills 25-18, 25-21, 15-25, 25-11; Mayfair def. Lancaster 25-11, 25-16, 25-22; Elsinore def. Santa Fe 25-12, 25-10, 25-19; St. Margaret's def. Cerritos 25-19, 25-22, 25-20; Victor Valley def. Eastside 25-14, 25-17, 25-9; Heritage def. San Geronio 26-24, 25-20, 25-8; Santa Monica def. Pioneer 25-14, 25-19, 25-19; JW North def. Paloma Valley 25-17, 17-25, 25-17, 25-22; La Mirada def. El Segundo 25-22, 23-25, 25-13, 25-22; California def. Crean Lutheran 25-20, 23-25, 25-22, 25-10; Quartz Hill def. Rialto 25-14, 25-6, 25-19.

**Second Round:** Sage Hill def. Valley View 25-11, 25-11, 25-14; Rim of the World def. La Serna 25-21, 25-23, 25-21; Culver City def. Poly/R 26-24, 25-20, 25-17; Elsinore def. Mayfair 25-18, 25-17, 25-18; St. Margaret's def. Victor Valley 25-14, 25-15, 25-18; Santa Monica def. Heritage 25-17, 25-20, 13-25, 25-18; La Mirada def. JW North 27-25, 15-25, 26-28, 25-18, 15-13; Quartz Hill def. California 25-8, 25-13, 25-20.

**Quarterfinals:** Sage Hill def. Rim of the World 25-16, 25-19, 25-21; Elsinore def. Culver City 13-25, 21-25, 25-18, 25-23, 15-11; St. Margaret's def. Santa Monica 25-16, 25-15, 25-18; Quartz Hill def. La Mirada 25-27, 25-19, 22-25, 25-12, 15-8.

**Semifinals:** Sage Hill def. Elsinore 25-8, 25-15, 19-25, 25-23; St. Margaret's def. Quartz Hill 25-16, 27-25, 25-21.

**Final:** Sage Hill def. St. Margaret's 25-16, 27-25, 25-21.

### DIVISION 3A

**First Round:** Saddleback Valley Christian def. San Jacinto 25-11, 25-3, 25-9; Wilson/Hac.Hgts def. El Monte 25-20, 25-10, 25-14; Aquinas def. Rubidoux 25-5, 25-6, 25-7; Santa Ynez def. MOn-tebello 25-21, 21-25, 25-16, 25-11; Gabrielino def. Lompoc 25-16, 25-23, 25-21; La Sierra def. Notre Dame/Riverside 25-18, 26-24, 13-25, 25-21; San Gabriel def. Fairmont Prep 25-15, 25-10, 25-23; West Valley def. Moreno Valley 25-10, 25-12, 25-9; Hemet def. San Bernardino 25-10, 25-4, 25-5; Bell Gardens def. South El Monte 25-13, 25-12, 25-11; Loma Linda Academy def. Patriot 25-19, 25-13, 24-26, 25-18; San Dimas def. Morro Bay 25-19, 25-22, 27-25; Woodcrest Christian def. Beaumont 25-12, 25-19, 25-19; Webb def.



Covina 25-15, 25-11, 21-25, 25-21; RAmona def. Vista Del Lago 26-24, 25-16, 25-19; Templeton def. Rosemead 25-14, 25-9 25-12.

**Second Round:** Saddleback Valley Christian def. Wilson/HH 25-11, 25-7, 25-6; Santa Ynez def. Aquinas 26-24, 25-19, 29-27; La Sierra def. Gabrielino 25-19, 23-25, 25-23, 25-15; San Gabriel def. West Valley 25-20, 25-14, 25-22; Hemet def. Bell Gardens 25-10, 23-25, 25-18, 25-18; Loma Linda Academy def. San Dimas 20-25, 25-16, 22-25, 25-21, 15-10; Woodcrest Christian def. Webb 25-16, 26-24, 15-25, 25-21; Templeton def. Ramona 25-19, 25-9, 25-12.

**Quarterfinals:** Saddleback Valley Christian def. Santa Ynez 25-14, 25-15, 25-16; La Sierra def. San Gabriel 25-19, 25-15, 21-25, 13-15, 15-8; Hemet def. Loma Linda Academy 21-25 25-22, 26-24, 20-25, 15-8; Woodcrest Christian def. Templeton 25-22, 25-22, 25-18; .

**Semifinals:** Saddleback Valley Chr.

**Final:** Saddleback Valley Christian def. Templeton 18-25, 25-16, 22-25, 25-19, 15-12.

## CIF SOUTHERN SECTION FORD 2014 GIRLS VOLLEYBALL CHAMPIONS

**DIVISION 1AA**  
Redondo Union

**DIVISION 1A**  
Aliso Niguel

**DIVISION 2AA**  
South Torrance

**DIVISION 2A**  
Palm Springs

**DIVISION 3AA**  
Sage Hills

**DIVISION 3A**  
Saddleback Valley Christian

**DIVISION 4AA**  
Alta Loma

**DIVISION 4A**  
Cate

**DIVISION 5AA**  
Santa Clarita Christian

**DIVISION 5A**  
Lake Arrowhead Christian

### DIVISION 4AA

**First Round:** Alta Loma def. Wildwood 25-8, 25-10, 25-13; Big Bear def. Westminster 25-17, 25-12, 25-12; St. Anthony def. Providence 25-15, 22-25, 25-17, 25-15 St. Bonaventure def. Providence/Santa Babraba 25-7, 25-13, 25-19; Vistamar def. Desert Mirage 25-12, 25-21, 25-15; Nordhoff def. Loara 25-16, 25-12, 25-19; Archer def. Dunn 25-11, 25-20, 25-11; Garden Grove def. Pomona Catholic 25-21, 25-13, 25-15; St. Paul def. Colony 25-14, 25-15, 25-16; Rolling Hills Prep def. La Quinta/Westminster 25-12, 26-24, 25-20; Segerstrom def. Desert Hot Springs 25-17, 25-23, 25-18; Pacifica Christian def. Villanova Prep 14-25, 25-21, 25-12, 25-11; St. Monica Catholic def. Laguna Blanca 25-23, 25-21, 9-25, 25-11; Shadow Hills def. California Academy Math/Science 25-15, 25-16, 25-8; Don Lugo def. Santiago/Garden Grove 25-18, 25-23, 25-21; La Reina def. Milken Community 25-11, 25-21, 25-18.

**Second Round:** Alta Loma def. Big Bear 25-11, 25-14, 25-16; St. Anthony def. St. Bonaventure 25-22, 25-23, 19-25, 25-13; Nordhoff def. Vistamar 25-22, 25-23, 17-25, 25-22; Garden Grove def. Archer 25-14, 21-25, 25-18, 23-25, 15-9; St. Paul def. Rolling Hills Prep 25-13, 25-15, 25-7; Pacifica Christian def. Segerstrom 25-19, 26-24, 25-22; Shadow Hills def. St. Monica Catholic 29-27, 27-25, 18-25, 25-22, 25-6; La Reina def. Don Lugo 25-11, 25-16, 25-6; .

**Quarterfinals:** Alta Loma def. St. Anthony 25-15, 24-26, 25-12, 25-20; Garden Grove def. Nordhoff 25-16, 14-25, 25-22, 25-18; St. Paul def. 25-22, 25-13, 24-26, 25-11; La Reina def. Shadow Hills 25-21, 25-19, 19-25, 25-22.

**Semifinals:** Alta Loma def. Garden Grove 25-19, 25-18, 25-17; La Reina def. St. Paul 25-22, 28-26, 25-27, 25-21.

**Final:** Alta Loma def. La Reina 25-15, 25-13, 27-25.

### DIVISION 4A

**First Round:** Cate Bye; Azusa def. Bassett 25-4, 25-18, 25-22; Mammoth def. Grand Terrace 25-11, 25-10, 25-19; Bishop Conaty-Loretto Bye; Gladstone def. Ramona Convent 25-11, 21-25, 15-25, 32-30, 15-10; Katella def. Desert Christian/Lancaster 25-17, 25-19, 25-13; St. Genevieve 25-22, 25-20, 19-25, 25-14; Summit Bye; Desert Bye; San Gabriel Mission def. Pomona 22-25, 25-12, 27-25, 25-19; Mary Star of the Sea def. Santa Clara 25-16, 25-16, 25-13; Savanna def. Fontana 25-17, 15-25, 25-20, 25-20; Anaheim Bye; Boron def. La puente 25-21, 28-26, 14-25, 25-19; Carpinteria def. St. Pius X-St. Matthias 25-23, 15-25, 25-15, 25-22; Duarte Bye.

**Second Round:** Cate def. Azusa 25-14, 25-21, 25-9; Bishop Conaty-Loretto def. Mammoth 25-20, 17-25, 25-17, 24-26, 15-8; Katella def. Gladstone 17-25, 25-20, 25-21, 25-23; Summite def. St. Genevieve 25-8, 25-15, 25-16; Desert def. San Gabriel Mission 21-25, 25-20, 25-16, 25-23; Savanna def. Mary Star of the Sea 25-22, 25-22, 25-20; Anaheim def. Boron 25-13, 25-9, 25-17; Duarte def. Carpinteria 25-20, 25-9, 25-9.

**Quarterfinals:** Cate def. Bishop Conaty-Loretto 25-15, 25-15, 27-25; Summit def. Katella 21-25, 25-16, 25-13, 25-18; Desert Def. Savanna 25-22, 25-23, 25-13; Duarte def. Anaheim 25-16, 21-25, 22-25, 25-19, 15-13.

**Semifinals:** Cate def. Summit 25-10, 25-8, 25-10; Duarte Def. Desert 15-25, 27-29, 25-23, 27-25, 15-10.

**Final:** Cate def. Duarte 15-25, 27-29, 25-23, 27-25, 15-10.

### DIVISION 5AA

**First Round:** Santa Clarita Christian Bye; Coastal Christian def. Glendale Adventist 19-25, 25-14, 25-21, 21-25, 15-13; La Sierra Academy def. Pilibos 25-9, 25-12, 25-13; Cornerstone Christian/Hemet Bye; Calvary Murrieta Bye; San Gabriel Academy def. Palm Valley 25-19, 28-26, 25-21; Coast Union n def. Riverside Christian 25-14, 25-12, 22-25, 25-20; Oakwood Bye; Faith Baptist def. Mesa Grande Academy 25-18, 25-21, 25-21; AGBU/Canoga Park Bye; California Lutheran def. Rancho Christian 25-17, 25-23, 25-27, 25-15; North Co Christian Bye; Upland Christian Bye; Temecula Prep def. Valley Christian/Santa Maria 25-12, 25-19, 25-15; Desert Christian Academy def. Trinity Classical Academy 20-25, 25-17, 25-23, 25-17; Buckley Bye.

**Second Round:** Santa Clarita Christian def. Coastal Christian 25-20, 25-15, 22-25, 25-13; La Sierra Academy def. Cornerstone Chr/H 23-25, 25-21, 19-25, 25-20, 15-8; Calvary Murrieta def. San Gabriel Academy 23-25, 25-22, 25-22, 26-24; Coast Union def. Oakwood 25-10, 25-12, 25-14; Faith Baptist def. AGBU/CP 25-14, 27-25, 26-24; North Co Christian def. California Lutheran 23-25, 25-17, 25-22, 25-23; Upland Christian def. Temecula Prep 22-5, 25-28, 18-25, 25-21, 15-11; Buckley def. Desert Christian Academy 24-26, 25-18, 25-17, 25-18.

**Quarterfinals:** Santa Clarita Christian def. La Sierra Academy 26-24, 19-25, 26-24, 25-20; Calvary Murrieta def. Coast Union 25-14, 25-19, 25-14; Faith Baptist def. North Co Christian 25-16, 25-27, 25-23, 23-25, 15-8; Upland Christian def. Buckley 25-15, 25-27, 25-16, 25-20.

**Semifinals:** Santa Clarita Christian def. Calvary Murrieta 25-7, 25-20, 25-24; Upland Christian def. Faith Baptist 25-15, 25-17, 15-25, 25-15.

**Final:** Santa Clarita Christian def. Upland Christian 25-17, 19-25, 24-26, 25-13, 15-11.

### DIVISION 5A

**First Round:** West Shores def. Eastside Christian 25-17, 25-12, 25-10; Baker Valley def. Vistor Valley Christian 25-12, 25-16, 25-11; Einstein Academy def. Waverly 22-25, 25-16, 25-12, 22-25, 15-12; University Prep def. Crossroads Christian 25-11, 25-14, 25-12; Tarbut V'Torah def. Calvary Christian 25-12, 25-11, 25-9; Pacific Lutheran def. New Harvest Christian 26-28 25-20, 25-20, 25-12; Trona def. Lucerne Valley 26-24, 25-22, 25-22; Lake Arrowhead Christian def. Newbury Park Adventist 25-16, 25-17, 25-14; Excelsior Charter def. Big Pine 25-6, 25-10, 25-11; Le Lycee def. Summit View-Westview 25-18, 25-10, 25-9; Liberty Christian def. Calvary Chapel/MV 25-23, 25-7, 25-26; Hesperia Christian def. Pilgrim 25-10, 25-13, 25-21; Avalon def. Shalhevet 25-9, 25-12, 25-19; Immanuel Christian def. Southwestern Academy 25-7, 25-14, 25-10; Academy for Academic Excellence def. San Jacinto Valley Academy 25-21, 25-12, 25-13; Hillcrest Christian/Thousand Oaks def. Cornerstone Christian/Wilomar 25-12, 25-11, 25-5.

**Second Round:** West Shores def. Baker Valley 25-9, 25-16, 25-10; University Prep def. Einstein Academy 25-22, 14-25, 23-25, 25-14, 15-11; Tarbut V'Torah 25-21, 22-25, 25-16, 25-18; Lake

## CIF SOUTHERN SECTION FORD 2014 GIRLS TEAM TENNIS PLAYOFF RESULTS

### DIVISION 1

**Wild Card Round:** Marlborough 10, Viewpoint 8; Tesoro 11, Redondo Union 11, Tesoro 7; Fountain Valley 16, La Quinta/La Quinta 2; La Canada 12, San Marcos 6.

**First Round:** Peninsula 18, Marlborough 0; Palm Desert 10, Northwood 8; San Clemente 14, South Pasadena 4; Santa Margarita 14, Dos Pueblos 4; Campbell Hall 16, Palm Springs 2; Tesoro 12, Westlake 6; Newport Harbor 12, Notre Dame/Sherman Oaks 6; Corona del Mar 15, El Dorado 3; Mira Costa 13, FOUNTAIN VALLEY 5; San Marino 17, Mater Dei 1; Harvard Westlake 11, Oaks Christian 7; Santa Barbara 13, Brentwood 5; Los Amigos 10, Thousand Oaks 8; Dana Hills 11, JSerra 7; Villa Park 13, Xavier Prep 5; University 16, La Canada 2..

**Second Round:** Peninsula 12, Palm Desert 6; Santa Margarita 11, San Clemente 7; Campbell Hall 12, Tesoro 6; Corona del Mar 12, Newport Harbor 6; Mira Costa 12, San Marino 6; Santa Barbara 11, Harvard Westlake 7; Los Alamitos 11, Dana Hills 7; University 11, Villa Park 7.

**Quarterfinals:** Peninsula 15, Santa Margarita 3; Corona del Mar 11, Campbell Hall 7; Santa Barbara 10, Mira Costa 8; Universtiy 15, Los Alamitos 3.

**Semifinals:** Peninsula 15, Corona del Mar 3; University 12, Santa Barbara 6.

**Final:** Peninsula 16, University 2.

### DIVISION 2

**Wild Card Round:** Whitney 12, Centennial/Corona 6; Ayala 13, Estancia 5; Calvary Chapel/Santa Ana 11, Hoover 7; West Ranch 13, Atascadero 5; Vista Murrieta 14, Trabuco Hills 4; Camarillo 12, Glendale 6; Glendora 11, St. Joseph/Santa Maria 7; Cate 11, Fullerton 7.

**First Round:** Valencia/Valencia 16, Whitney 2; Arcadia 11, Mission Viejo 7; Arroyo Grande 13, Sunny Hills 5; La Reina 11, Ayala 7; St. Margaret's 12, Calvary Chapel/SA 6; ML King 14, Oak Park 4; Temecula Valley 13, South Hills 5; Beverly Hills 11, West Ranch 7; Laguna Beach 14, Vista Murrieta 4; Carpinteria 10, Santiago/Corona 8; Troy 10, Camarillo 8; Hart 13, Glendora 5; Santa Monica 9, Burbak 9 (87-76); Sage Hill 15, San Juan Hills 5; Simi Valley 11, San Luis Obispo 7; Murrieta Valley 12, Cate 6.

**Second Round:** Valencia/V 10, Arcadia 8; Arroyo Grande 12, La Reina 6; ML King 14, St. Margaret's 4; Beverly Hills 10, Temecula Valley 8; Laguna Beach 14, Carpinteria 4; Troy 9, Hart 9 (74-72); Sage Hill 10, Santa Monica 8; Murrieta Valley 16, Simi Valley 2.

**Quarterfinals:** Valencia/V 9, Arroyo Grande 9 (81-73); Beverly Hills 9, ML King 9 (70-64);

Laguna Beach 9, Troy 9 (79-74); Murrieta Valley 15, Sage Hill 3.

**Semifinals:** Valencia/V 10, Beverly Hills 6; Murrieta Valley 12, Laguna Beach 6.

**Final:** Valencia/V 10, Murrieta Valley 8.

### DIVISION 3

**Wild Card Round:** West Covina 10, Lakewood 8; Orcutt Academy 15, Milken Community 3; Pacifica/Garden Grove 12, Citrus Valley 6; Downey 14, Glenn 4.

**First Round:** Redlands 17, West Covina 1; Cypress 9, Brea Olinda 9 (78-73); Buckley 14, Mayfair 4; Cabrillo/Lompoc 10, Westridge 8; Poly/Long Beach 17, Cajon 1; Walnut 14, Paramount 4; Rio Mesa 12, Norwalk 6; Poly/Pasadena 12, Orcutt Academy 6; Yorna Linda 12, Pacifica/GG 6; Millikan 17, Oxnard 1; Warren 14, Lompoc 4; Cerritos 15, Oakwood 3; Yucaipa 16, Chino 2; Santa Ynez 18, Pacifica/Oxnard 0; Chadwick 9, Wilson/Long Beach 9 (85-69); Valencia/Placentia 14, Downey 4.

**Second Round:** Redlands 12, Cypress 6; Buckley 12, Cabrillo/L 6

Poly/L 11, Walnut 7; Poly/P 15, Rio Mesa 3; Yorba Linda 17, Millikan 1; Cerritos 13, Warren 5; Santa Ynez 10, Yucaipa 8; Valencia/P 14, Chadwick 4.

**Quarterfinals:** Redlands 12, Buckley 6; Poly/P 13, Poly/LB 5; Cerritos 11, Yorba Linda 7; Valencia 9, Santa Ynez 9 (81-74).

**Semifinals:** Poly/P 12, Redlands 6; Valencia/P 12, Cerritos 6.

**Final:** Poly/Pasadena 10, Valencia/Placentia 8.

### DIVISION 4

**Wild Card Round:** Chaminade 13, Highland 5; Burroughs/Ridgecrest 11, Grand Terrace 7; La Serna 16, St. Monica Catholic 2; JW North 16, Rancho Alamitos 2; Whittier 11, St. Joseph/Lakewood 7; El Monte 16, Antelope Valley 2; St. Lucy's 17, Ontario Christian 1; North Torrance 13, Covina 5; Wilson/Hacienda Heights, Ramona Convent Forfeit; San Gabriel 11, Arlington 7; Arroyo 13, Woodcrest Christian 5.

**First Round:** Poly/Riverside 17, Chaminade 1; Rosemead 14, Burroughs/R 4; Chino Hills 15, Notre Dame/Riverside; La Quinta/Westminster 13, La Serna 5; Rowland 16, JW North 2; Mark Keppel 15, Lancaster 3; Serrano 13, Notre Dame Academy 5; West Torrance 14, Whittier 4; Garden Grove 15, El Monte 3; Alhambra 16, Summit 2; Flintridge Sacred Heart 11, St. Lucy's 7; Bishop Montgomery 10, North Torrance (darkness); Los Osos 18, Oak Hills 0; Wilson/HH 11, California 7; San Gabriel 11, Quartz Hill 7; South Torrance 15, Arroyo 3.

**Second Round:** POLY/R 18, Rosemead 0; Chino Hills 13, La Quinta/W 5; Rowland 12, Mark Keppel 6; Serrano 9, West Torrance 9 (65-62); Garden Grove 12, Alhambra 6; Bishop Montgomery 12, Flintridge Sacred Heart 6; Los Osos 12, Wilson/HH 6; South Torrance 14, San Gabriel 4.

**Quarterfinals:** Poly/R 12, Chino Hills 6; Rowland 12, Serrano 6; Bishop Montgomery 11, Garden Grove 7; South Torrance 12, Los Osos 6.

**Semifinals:** Poly/Riverside 13, Rowland 5; South Torrance 12, Bishop Montgomery 5.

**Final:** South Torrance 10, Poly/Riverside 8.

### DIVISION 5

**Wild Card Round:** Santa Puala 12, Whittier Christian 6; Fairmont Prep 11, Azusa 7; Twentynine Palms 12, San Geronio 6; Temescal Canyon 15, Barstow 3; Ramona 10, Heritage 8; Westminster 16, Shadow Hills 2; Savanna 15, Connelly 3; Beaumont 13, Gladstone 5; Foothill Technology 10, Pomona 8; Rubidoux 16, Silverado 2; Villanova Prep 10, Katella 8; Don Lugo 16, La Puente 2; Rancho Mirage 10, Jurupa Hills 8.

**First Round:** Orange 14, Santa Paula 4; Fairmont Prep 9, Garey 9 (84-71); Vista Del Lago 14, Twentynine Palms 4; La Sierra 12, Temescal Canyon 6; Alta Loma 11, Ramona 7; Rim of the World 13, San Jacinto 5; Sierra Vista 10, Westminster 8; Thacher 15, Savanna 3; Maranatha 14, Beaumont 4; Montclair 11, Granite Hills 7; Magnolia 9, Norte Vista (83-75); Foothill Technology 13, Yuca Valley 5; Segerstrom 17, Rubidoux 1; Hemet 10, Villanova Prep 8; Webb 11, Don Lugo 7; Elsinore 14, Rancho Mirage 4.

**Second Round:** Orange 12, Fairmont Prep 6; La Sierra 11, Vista Del Lago 6 (darkness); Alta Loma 10, Rim of the World 8; Thacher 14, Sierra Vista 4; Maranatha 12, Montclair 6; Magnolia 14, Foothill Technology 4; Segerstrom 13, Hemet 5; Webb 10, Elsinore 8.

**Quarterfinals:** Orange 10, La Sierra 8; Thacher 11, Alta Loma 7; Maranatha 14, Magnolia 4; Webb 11, Segerstrom 7.

**Semifinals:** Thacher 15, Orange 3; Maranatha 12, Webb 6.

**Final:** Maranatha 11, Thacher 7.

## CIF SOUTHERN SECTION FORD 2014 GIRLS INDIVIDUAL TENNIS PLAYOFF RESULTS

### SINGLES

**First Round:** Summer Garrison (Santa Barbara) def. Dannielle Willson (Corona del Mar) 6-2, 6-4; Jennifer Lu (Los Alamitos) def. Jadie Acidera (JSerra) 6-3, 6-4; Kelsie Bryant (Carpinteria) def. Kristian Breisacher (Santa Margarita) 6-1, 7-6 (9); Danielle Garrido (Culver City) def. Grace Danco (Brentwood) 6-3, 6-2.

**Second Round:** Ena Shibahara (Peninsula) def. Summer Garrison 6-2, 6-4; Constance Branstine (Villa Park) def. Christie Wan (Whittier Christian) 6-7 (3), 6-2, 6-2; Katie Ta (Capistrano Valley) def. Martina Bocchi (Beverly Hills) 6-3, 7-5; Amber Park (Poly/Pasadena) def. Jennifer Lu 6-2, 6-0; Summer Dvorak (Laguna Beach) def. Kelsie Bryant 6-7 (3), 6-1, 6-2; Emily Maxfield (Murrieta Valley) def. Caisey Lee Emery (Buena) (Walk-

Over); Richel Kim (Villa Park) def. Justine Huang (Tesoro) 6-0, 6-3; Ryan Peus (Peninsula) def. Danielle Garrido 6-1, 6-2.

**Quarterfinals:** Ena Shaibahara def. Constance Branstine 6-1, 6-1; Katie Ta def. Amber Park 6-2, 6-1; Summer Dvorak def. Emily Naxfield 6-2, 6-3; Ryan Peus def. Richel Kim 6-1, 6-1.

**Semifinals:** Ena Shibahara def. Katie Ta 6-2, 7-6 (2); Summer Dvorak def. Ryan Peus 1-6, 7-5, 6-3.

**Final:** Ena Shibahara def. Summer Dvorak 6-2, 6-2.

### DOUBLES

**First Round:** Tiffany Madiambayan/Ashlyn Wang (University) def. Erika Cheng/Sydney bott (Los Alamitos) 6-3, 2-6, 6-3; Brenda

Romo/Kaitlyn Nguyen (Tesoro) def. Madeleine Gandawidjaja/Sophia Lee (San Marino) 6-2, 6-4; Anna Trifrea/Kaylee Kang (Troy) def. Emily Gorezyza/Elise Mackensen (Dana Hills) 6-4, 2-6, 6-1; Hope Hairrell/Hailey Hairrell (Los Alamitos) def. Sophie Bendetti/Anni Kum (Oaks Christian) 4-6, 7-6 (3), 6-3.

**Second Round:** Risa Nakagawa/Sara Khat-tab (Peninsula) def. Tiffany Madiambayan/Ashley Wang 6-2, 6-0; Mary Kaffen/Zoe Kaffen (JSerra) def. Katie Yang/KC Egger (Dos Pueblos) 6-3, 6-7 (3), 6-3; Joy Kim/Jay Kim (Campbell Hall) def. Sienna Sharf/Riley Gerdau (Corona del Mar) 2-6, 6-4, 7-5; Natalia Munoz/Proyfon Lobaphaisan (Hart) def. Brenda Romo/Kaitlyn Nguyen 6-2, 6-4; Ally McKenzie/Cassie McKenzie (La Canada) See **TENNIS** on page 15



# CIF SOUTHERN SECTION FORD 2014 BOYS WATER POLO PLAYOFF RESULTS

**DIVISION 1**

**Wild Card Round:** Irvine 9, Millikan 4 Notre Dame/SO 10, Thousand Oaks 3.  
**First Round:** Harvard Westlake 23, Irvine 2; Orange Lutheran 18, Westlake 9; Wilson/LB 11, Edison 5; Corona del Mar 15, Notre Dame/SO 9; Loyola 14, Northwood 6; Huntington Beach 12, Santa Margarita 8; Newport Harbor 9, Agoura 8; Mater Dei 19, Poly/LB 2  
**Quarterfinals:** Harvard Westlake 22, Orange Lutheran 89; Corona del Mar 10, Wilson/LB 9; Huntington Beach 8, Loyola 7; Mater Dei 11, Newport Harbor 4.  
**Semifinals:** Harvard Westlake 13, Corona del Mar 2; Mater Dei 16, Huntington Beach 10.  
**Final:** Harvard Westlake 10, Mater Dei 7.

**DIVISION 2**

**Wild Card Round:** Peninsula 12, Corona 7.  
**First Round:** Foothill 19, Peninsula 2; El Toro 10, Damien 9; San Clemente 13 San Marcos 12; Mira Costa 16, Santiago/C 8; Los Osos 12, Palos Verdes 11; Dos Pueblos 11, Villa Park 3; ML King 11, Ventura 8; Dana Hills 18, Chino Hills 7.  
**Quarterfinals:** Foothill 9, El Toro 6 Mira Costa 10, San Clemente 7; Los Osos 11, Dos Pueblos 8; Dana Hills 20, ML King 11.  
**Semifinals:** Foothill 10, Mira Costa 9; Los Osos 9, Dana Hills 7.  
**Final:** Foothill 10, Los Osos 7.

**DIVISION 3**

**Wild Card Round:** Vista Murrieta 12, San Marino 11; Aliso Niguel 12, Schurr 2; Sage Hill 14, Alhambra 5.  
**First Round:** Laguna Beach 21, Vista Murrieta 3; Aliso Niguel 11, Royal 10; Yorba Linda 10, Temple City 7; Capistrano Valley 20, Chaparral 7; Montebello 15, Brea Olinda 3; Trabuco Hills 12, Costa Mesa 8; La Canada 11, Moorpark 10; Murrieta Valley 13, Sage Hill 3.  
**Quarterfinals:** Laguna Beach 19, Aliso Niguel 6; Capistrano Valley 12, Yorba Linda 7; Montebello 12, Trabuco Hills 3; Murrieta Valley 13, La Canada 5.  
**Semifinals:** Laguna Beach 16, Capistrano Valley 7; Montebello 12, Murrieta Valley 11 (3 OT).  
**Final:** Laguna Beach 12, Montebello 8.

**DIVISION 4**

**Wild Card Round:** Hoover 22, Warren 8; Troy 10, San Luis Obispo 6; Atascadero 16, Brentwood 12; Burbank 11, Culver City 10.

**CIF  
SOUTHERN SECTION  
FORD  
2014 WATER POLO  
CHAMPIONS**

**DIVISION 1  
Harvard Westlake**

**DIVISION 2  
Foothill**

**DIVISION 3  
Laguna Beach**

**DIVISION 4  
Righetti**

**DIVISION 5  
Claremont**

**DIVISION 6  
Malibu**

**DIVISION 7  
Rio Mesa**

**First Round:** Righetti 24, Hoover 14; Sunny Hills 13, Chadwick 9; Santa Monica 16, Downey 2; Crescenta Valley 12, Troy 9 (OT); El Segundo 19, Atascadero 11; Glendale 14, Sonora 7; Arroyo Grande 13, Flintridge Prep 10; Cerritos 21, Burbank 2.

**Quarterfinals:** Righetti 14, Sunny Hills 2; Crescenta Valley 15, Santa Monica 8; Glendale 9, El Segundo 8; Cerritos 13, Arroyo Grande 6.

**Semifinals:** Righetti 14, Crescenta Valley 4; Cerritos 11, Glendale 4.

**Final:** Righetti 18, Cerritos 4.

**DIVISION 5**

**Wild Card Round:** Citrus Valley 21, Arlington 6; Glendora 15, Whittier 7; Redlands East Valley 11, Palm Springs 8.

**First Round:** Claremont 19, Citrus Valley 9; Webb 15, Palm Desert 12; Poly/R 21, Walnut 9; Redlands 19, El Rancho 5; Los Altos 20, Glendora 9; Xavier Prep 8, Yucaipa 3; Ayala 18, JW North 5; La Serna 12, Redlands East Valley 10.

**Quarterfinals:** Claremont 18, Webb 10; Redlands 7, Poly/R 5; Los Altos 13, Xavier Prep 8; La Serna 15, Ayala 8.

**Semifinals:** Claremont 17, Redlands 7; Los Altos 16, La Serna 11.

**Final:** Claremont 15, Los Altos 7.

**DIVISION 6**

**Wild Card Round:** Tustin 16, Villanova Prep 7.  
**First Round:** Malibu 19, Santa Ana 4; Elsinore 13, Kennedy 12; Santa Ynez 14, Lakeside 7; Beaumont 20, Ocean View 9; Temescal Caqnyon 10, Tustin 8; emet 12, Cabrillo/Lompoc 5; Valencia/Placentia 16, Nordhoff 12; Segerstrom 19, Morro Bay 3.

**Quarterfinals:** Malibu 14, Elsinore 5; Beaumont 12, Santa Ynez 7; Temescal Canyon 4, Hemet 3; Segerstrom 8, Valencia/P 6

**Semifinals:** Malibu 19, Beaumont 9; Segerstrom 11, Temescal Canyon 9.

**Final:** Malibu 10, Segerstrom 7.

**DIVISION 7**

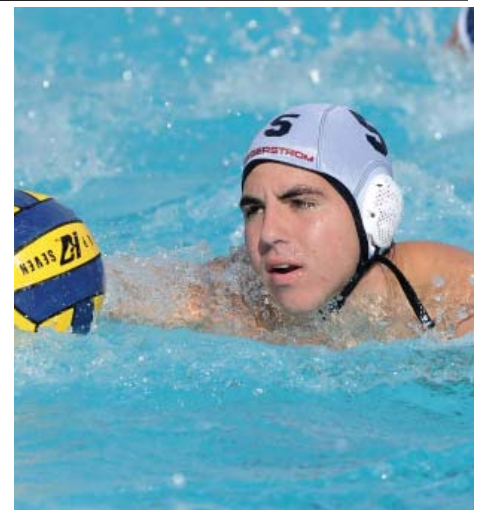
**Wild Card Round:** Granite Hills 17, Katella 5; Los Amigos 10, La Sierra 8; Colony 10, Garden Grove 9; San Dimas 20, Sierra Vista 0; Ramona 18, Alta Loma 6; Oxnard 21, La Puente 1; Nogales 16, Fontana 8.

**First Round:** Rio Mesa 21, Granite Hills 3; Los Amigos 10, Baldwin Park 7; Jurupa Valley 9, Colony 6; San Dimas 14, San Gorgonio 6; Rowland 12, Ramona 8; Pacifica/Oxnard 11, Santa Ana Valley 6; Oxnard 11, Rancho Alamitos 9; Don Lugo 17, Nogales 12.

**Quarterfinals:** Rio Mesa 21, Los Amigos 4; San Dimas 11, Jurupa Valley 6; Rowland 8, Pacifica/O 7; Don Lugo 8, Oxnard 7.

**Semifinals:** Rio Mesa 16, San Dimas 10; Don lugo 11, Rowland 5.

**Final:** Rio Mesa 11, Don Lugo 9.





# 2014 CIF SOUTHERN SECTION FORD BOYS/GIRLS CROSS COUNTRY RESULTS

## DIVISION 1 - BOYS

### Team

1. Burroughs/Burbank - 70
2. Dana Hills - 91
3. Great Oak - 123
4. Poly/Long Beach - 174
5. Loyola - 180

### Individual

1. Phillip Rocha, Arcadia - 1:35
2. Robert Brandt, Loyola - 14:46
3. Jake Ogdon, Dana Hills - 14:52
4. Nick Doan, Great Oak - 14:59
5. Branden Randall, Roosevelt - 15:05

## DIVISION 2 - BOYS

### Team

1. Ventura - 83
2. Jurupa Hills - 101
3. Canyon/Anaheim - 120
4. Claremont - 136
5. CSaugus - 144

### Individual

1. Michael Teran, Jurupa Hills - 14:44
2. Brian Zabilski, Saugus - 14:49
3. Garrett Reynolds, Ventura - 14:58
4. Devon Reed, Jurupa Hills - 15:03
5. Wesley Walsh, Canyon/Anaheim - 15:06

## DIVISION 3 - BOYS

### Team

1. Brea Olinda - 44
2. Agoura - 87
3. Palos Verdes - 120
4. Rubidoux - 139
5. Paso Robles - 142

### Individual

1. Austin Tamagno, Brea Olinda - 14:39
2. Robert Franklin, Palos Verdes - 15:01
3. Austin Shellito, Brea Olinda - 15:01
4. Luis Ramos, Rubidoux - 15:04
5. Nick Lofgren, South Torrance - 15:07

## DIVISION 4 - BOYS

### Team

1. Bishop Amat - 90
2. Covina - 107
3. San Luis Obispo - 145
4. Foothill Technology - 146
5. Cathedral - 157

### Individual

1. Caleb Webb, Big Bear - 14:42
2. William Ernst, Costa Mesa - 14:57
3. Tomas Navarro, Salesian - 14:58
4. Callum Bolger, San Luis Obispo - 15:03
5. Andrew Burkhardt, JSerra - 15:09

## DIVISION 5 - BOYS

### Team

1. Xavier Prep - 65
2. Flintridge Prep - 85
3. Desert Christian/L - 107
4. Thacher - 138
5. St. Margaret's - 142

### Individual

1. Jack Van Scoter, Flintridge Prep - 15:07
2. Collin Price, St. Margaret's - 15:16
3. Cosmo Brossy, Brentwood - 15:18
4. Jacob Robison, St. Margaret's - 15:30
5. Stephen Pacheco, Desert Christian/L - 15:32

## DIVISION 1 - GIRLS

### Team

1. Great Oak - 20
2. Yucaipa - 98
3. Arcadia - 155
4. Trabuco hills - 170
5. Poly/Long Beach - 172

### Individual

1. Destiny Collins, Great Oak - 17:21
2. Kiyena Beatty, Great Oak - 17:31
3. Candela Fernandez, Burbank - 17:32
4. Emily Clause, Great Oak - 17:34
5. Thalia Adams, Roosevelt - 17:58

## DIVISION 2 - GIRLS

### Team

1. Saugus - 81
2. Capistrano Valley - 94
3. Serrano - 113
4. Simi Valley - 156
5. Redondo Union - 158

### Individual

1. Amber Gore, Redondo Union - 17:03
2. Claire Graves, Citrus Valley - 17:07
3. Samantha Ortega, Saugus - 17:20
4. Amanda Gehrlich, Tesoro - 17:23
5. Taylor Taite, Murrieta Mesa - 17:41

## DIVISION 3 - GIRLS

### Team

1. Palos Verdes - 80
2. Esperanza - 103
3. Moorpark - 149
4. Paso Robles - 156
5. South Torrance - 162

### Individual

1. Brianna Bartello, Laguna Hills - 17:17
2. Kimberly Coscia, South Torrance - 17:40
3. Jacquelin Smith, Palos Verdes - 17:44
4. Marissa Bartello, Laguna Hills - 17:50
5. Stefani Gaskell, Sultana - 17:52

## DIVISION 4 - GIRLS

### Team

1. Bishop Amat - 63
2. JSerra - 101
3. Covina - 134
4. Laguna Beach - 144
5. Atascadero - 144

### Individual

1. Carolyn Pietrzyk, Malibu - 16:68
2. Ally Palomino, Bishop Amat - 17:13
3. Ashley Geisler, JSerra - 18:07
4. Emily Hubert, Bishop Amat - 18:12
5. Kayla Grahn, Flintridge Sacred Heart - 18:49

## DIVISION 5 - GIRLS

### Team

1. Flintridge Prep - 36
2. Mayfield - 42
3. Chadwick - 152
4. Woodcrest Christian - 158
5. Xavier Prep - 173

### Individual

1. Emily Serhan, Mayfield - 18:30
2. Katherin Tighe, Mayfield - 18:42
3. Natalie O'Brien, Flintridge Prep - 18:53
4. Julia Lowe, Sage Hill - 19:03
5. Marissa Sanchez, Mayfield - 19:04

## VOLLEYBALL

(Continued from page 11)

Arrowhead Christian def. Trona 25-11, 25-7, 25-16; Excelsior Charter def. Le Lycee 25-8, 25-11, 25-21; Hesperia Christian def. Liberty Christian 9-25, 25-20, 25-29, 20-25, 15-4; Immanuel Christian def. Avalon 20-25, 25-22, 19-25, 25-18, 15-8; Aca. for Acad. Excel def. Hillcrest Chr./TO 25-22, 26-15, 25-23, 25-17.

**Quarterfinals:** University Prep def. West Shores 20-25, 27-25, 25-21m 25-23; Lake Arrowhead Chr. def. Tarbut V'Torah 24-26, 25-10, 25-22, 25-15; Excelsior Charter def. Hesperia Chr. 25-15, 25-23, 19-25, 14-25, 15-9; Aca. for Acad Excel def. Immanuel Chr. 25-3, 22-25, 27-29, 25-19, 15-9;

**Semifinals:** Lake Arrowhead Chr. def. University Prep 25-13, 18-25, 25-15, Aca for Acad. Excel def. Excelsior Charter 26-24, 25-28, 25-14.

**Final:** Lake Arrowhead Christian def. Academy for Academic Excellence 23-25, 25-13, 25-14, 25-22.



## TENNIS

(Continued from page 12)

def. Anna Trifrea/Kaylee Kang 6-1, 6-1; Tracy Van/Tamm Van (Bolssa Grande) def. Jenna Moustafa/Juliana Simon (Harvard Westlake) 6-4, 6-3; Mahli Silpachai/Emily Ackerman (Thousand Oaks) def. Tia Elpusan/Sarina Liu (Peninsula) 6-1, 6-2; Mattea Kilstofte/Madison Hale (Santa Barbara) def. Hope Hairrell/Hailey Hairrell 6-4, 6-0.

**Quarterfinals:** Nakagawa/Khattab def. Kaffen/Kaffen 6-0, 6-0; Kim/Kim def. Munoz/Lobaphaisan 7-6 (3), 5-7, 6-3; McKenzie/McKenzie def. Van/Van 6-2, 6-3; Kilstofte/Hale def. Silpachai/Ackerman 6-1, 4-6, 6-3).

**Semifinals:** Nakagawa/Khattab def. Kim/Kim 6-3, 6-3; Kilstofte/Hale def. McKenzie/McKenzie 6-4, 6-3.

**Final:** Nakagawa/Khattab/ def. Kilstofte/Hale 4-6, 6-4, 6-3.



# CIF SOUTHERN SECTION PARTNERS

*Proudly Supporting Southern California's Student-Athletes*



**SOUTHERN CALIFORNIA FORD DEALERS**



*This Sponsor is Official Equipment of the CIF Southern Section - NMS Championships*



Official Partner  
of the CIF-SS



Official Partner  
of the CIF-SS



Official Partner  
of the CIF-SS



Official Partner  
of the CIF-SS



Official Sponsor  
of the CIF-SS Sports & Events



Official Sponsor  
of the CIF-SS



Official Partner  
of the CIF-SS



Official Partner  
of the CIF-SS



Official Partner of the  
CIF-SS Championships



Official Sponsor of the  
CIF-SS



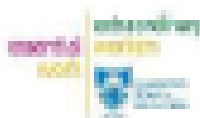
Official Partner  
of the CIF-SS



Official Official Supplier  
of the CIF-SS



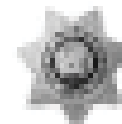
Official Official Supplier  
of the CIF-SS



Sponsoring Partner  
of the CIF-SS



Official  
Team Partner  
of the CIF-SS



Sponsoring Partner  
of the CIF-SS



Sponsoring Partner  
of the CIF-SS



Sponsoring Partner  
of the CIF-SS



Official Official Supplier  
of the CIF-SS



Sponsoring Partner  
of the CIF-SS Sports & Events



Official Official Supplier  
of the CIF-SS